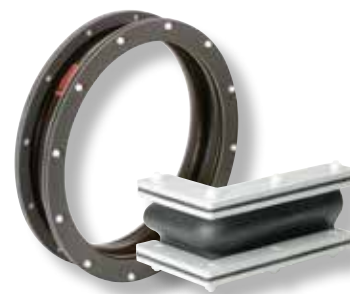


# WILLBRANDT Rubber Expansion Joint Type 64

■ not in stock

Type 64 is a very flexible rubber expansion joint that is manufactured from prefabricated foils and vulcanised or cold-vulcanised (glued) in the final form, depending on the material. The expansion joint dimensions depend on your design dimensions and the movement to be absorbed. There are no standard dimensions for this type.

Areas of application are the stress-free installation of fans and blowers, bulk goods and conveyor technology.



<b>Bellow design</b>	The bellow consists of a layer of rubber sheeting with or without a fabric insert. The joint is either hot-vulcanised or glued (cold-vulcanised). Bellow moulds are available with and without a preformed corrugation (a corrugation is only possible in EPDM).	<b>Pressure resistance</b>	Depending on the closure of the joint and the rubber material up to +/-0.2 bar (cold vulcanised) or +/- 0.33 bar (hot vulcanised)
<b>Fixing</b>	The type of clamp/tension bands and the type design/perforation of the backing flanges can be freely selected.	<b>Approvals/Conformity</b>	FDA and EG 1935/2004 conformity possible on request.
		<b>Accessories</b>	- Guide sleeves - Dust and splash protection covers - Earth cover / sun protection cover Further information on page 99 - 105.

## Specifications

Bellow		Core (inner)	Bellow design*1			Thickness mm	Max. temperature °C	Max. pressure		Version
Colour code	Colour marking		Reinforcement	Cover (outer)	bar			bar		
red	■	EPDM	Polyamide	EPDM	3.0	120	-0.4	+0.4	1 - 4	
red	■	EPDM	Polyamide	EPDM	4.0	120	-0.4	+0.4	1 - 4	
lilac*2	■	FPM	Aramide	FPM	3.0	200	-0.4	+0.4	1 + 3	
yellow*2	■	NBR	without	NBR	4.0	90	-0.4	+0.4	1 + 3	
grey*2	■	CR	without	CR	4.0	90	-0.4	+0.4	1 + 3	

\*1 Other rubber compounds on request.

\*2 Only without convolution (bellow profiles type 64-2 and type 64-4).

## Application

### Type 64 red

For hot and cold air and bulk materials. Good resistance to weather, ageing and ozone. Not suitable for oil products of any kind or cooling water with additives containing oil.

### Type 64 lilac

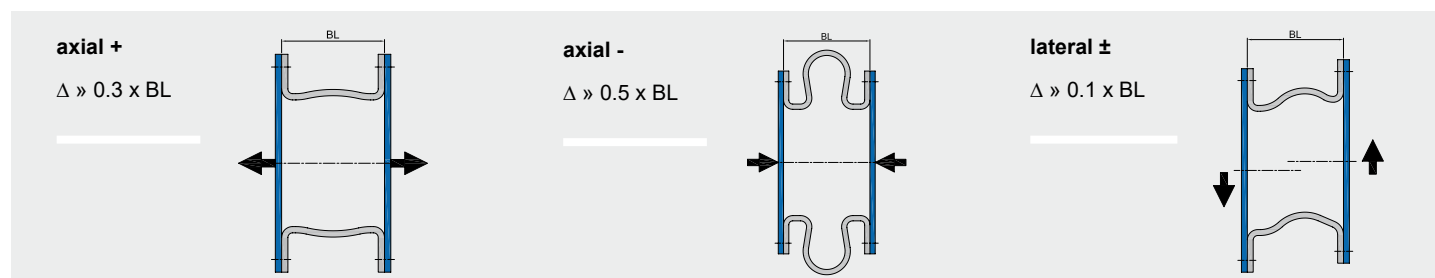
For aggressive exhaust air, flue gas and bulk materials.

### Type 64 yellow

For air containing oils/fats, gases and bulk materials.

### Type 64 grey (CR)

For air containing oils/fats, flue gases from treatment plants and bulk materials.

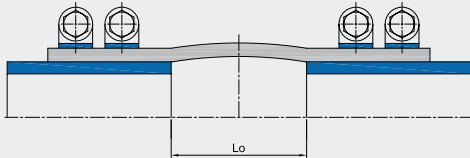


# WILLBRANDT Rubber Expansion Joint Type 64

## Bellows profiles

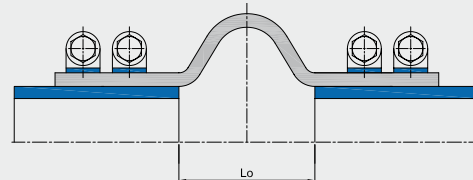
**Type 64-1**

Uncorrugated with straight ends for round or square versions



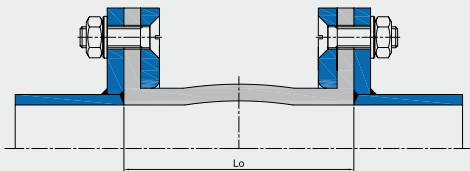
**Type 64-2**

Corrugated with straight ends for round or square versions



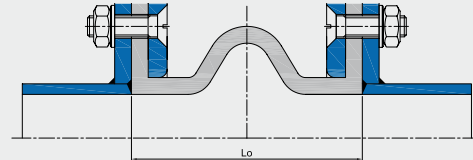
**Type 64-3**

Uncorrugated with flange connection for round or square versions



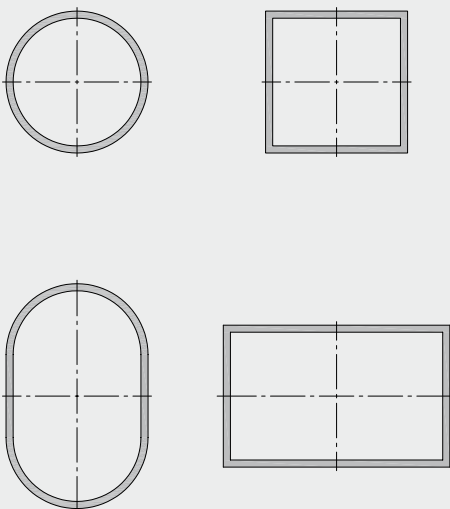
**Type 64-4**

Corrugated with flange connection for round or square versions

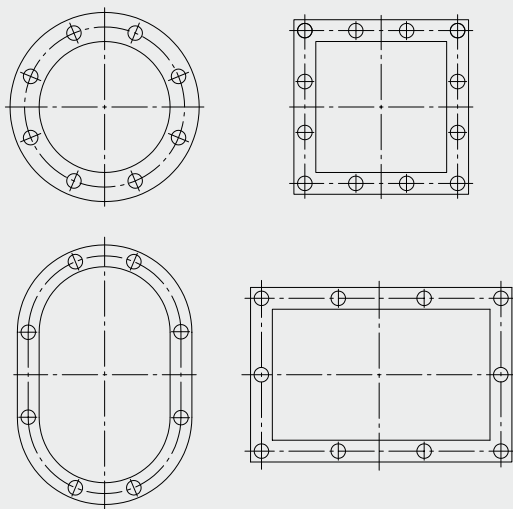


## Cross-sections

**Cross-sections with straight ends for fixing clamps and mounting bars**



**Cross-sections for flange mounting**



## Important information

For aggressive media, please have the material resistance checked by our engineers.  
The bellows must not be painted or insulated at media temperatures >50 °C.  
Please also note the planning instructions.