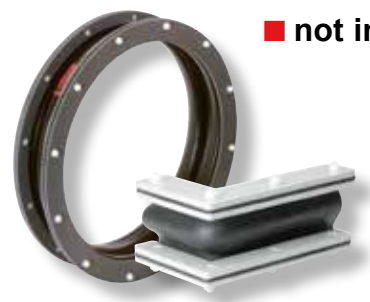


WILLBRANDT Rubber Expansion Joint Type 64

■ not in stock



Type 64 is a very flexible rubber expansion joint that is manufactured from prefabricated foils and vulcanised or cold-vulcanised (glued) in the final form, depending on the material. The expansion joint dimensions depend on your design dimensions and the movement to be absorbed. There are no standard dimensions for this type.

Areas of application are the stress-free installation of fans and blowers, bulk goods and conveyor technology.

Bellow design	The bellow consists of a layer of rubber sheeting with or without a fabric insert. The joint is either hot-vulcanised or glued (cold-vulcanised). Bellow moulds are available with and without a preformed corrugation (a corrugation is only possible in EPDM or NBR white).	Pressure resistance	Depending on the closure of the joint and the rubber material up to +/-0.2 bar (cold vulcanised) or +/- 0.33 bar (hot vulcanised).
Fixing	The type of clamp/tension bands and the type design/perforation of the backing flanges can be freely selected.	Approvals/Conformity	FDA and EG 1935/2004 conformity possible on request. (Detailed overview on page 5.)
		Accessories	- Guide sleeves - Dust and splash protection covers - Earth cover / sun protection cover Further information on page 99 - 105.

Specifications

Bellow		Bellow design*1			Thickness	Max. temperature	Max. pressure		Version
Colour code	Colour marking	Core (Inner)	Reinforcement	Cover (outer)			bar	bar	
red	■	EPDM	Polyamide	EPDM	3.0	120	-3.33	+3.33	1 - 4
red	■	EPDM	Polyamide	EPDM	4.0	120	-3.33	+3.33	1 - 4
lilac*2	■	FPM	Aramide	FPM	3.0	200	-3.33	+3.33	1 + 3
white	□	NBR white	Polyamide	NBR white	3.0	110	-3.33	+3.33	1 - 4
yellow*2	■	NBR	without	NBR	4.0	90	-0.20	+0.20	1 + 3
grey*2	■	CR	without	CR	4.0	90	-0.20	+0.20	1 + 3

*1 Other rubber compounds on request.

*2 Only without convolution (bellow profiles type 64-2 and type 64-4).

Application

Type 64 red

For hot and cold air and bulk materials. Good resistance to weather, ageing and ozone. Not suitable for oil products of any kind or cooling water with additives containing oil.

Type 64 lilac

For aggressive exhaust air, flue gas and bulk materials.

Type 64 white

For contact with food - white-coloured rubber in food-grade (FDA and

EG 1935/2004 conform). Not approved for drinking water!

Type 64 yellow

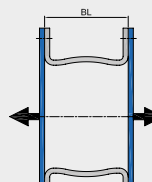
For air containing oils/fats, gases and bulk materials.

Type 64 grey (CR)

For air containing oils/fats, flue gases from treatment plants and bulk materials.

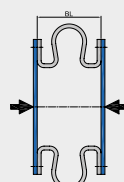
axial +

$\Delta \gg 0,3 \times BL$



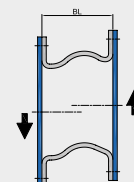
axial -

$\Delta \gg 0,5 \times BL$



lateral ±

$\Delta \gg 0,1 \times BL$

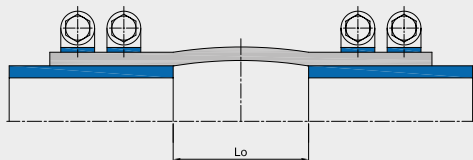


WILLBRANDT Rubber Expansion Joint Type 64

Bellows profiles

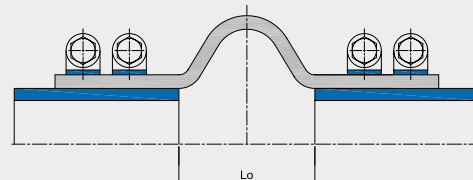
Type 64-1

Uncorrugated with straight ends for round or square versions



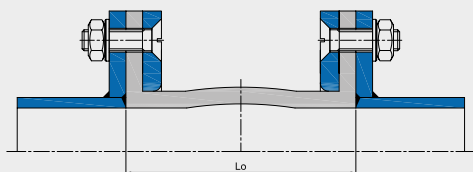
Type 64-2

Corrugated with straight ends for round or square versions



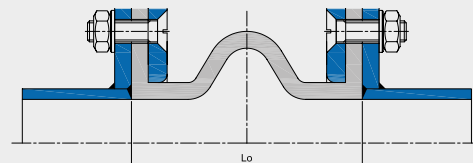
Type 64-3

Uncorrugated with flange connection for round or square versions



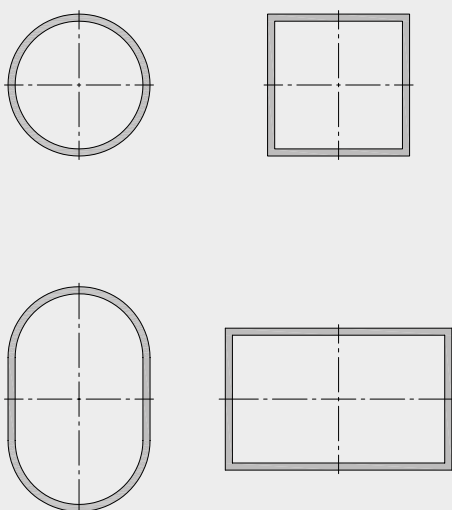
Type 64-4

Corrugated with flange connection for round or square versions

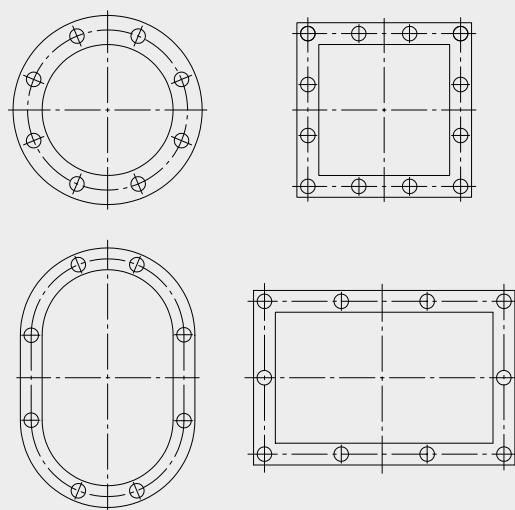


Cross-sections

Cross-sections with straight ends for fixing clamps and mounting bars



Cross-sections for flange mounting



Important information

For aggressive media, please have the material resistance checked by our engineers.
The bellows must not be painted or insulated at media temperatures >50 °C.
Please also note the planning instructions.